



NOTICE OF MEETING

CITY OF PACIFIC GROVE MUSEUM BOARD MEETING AGENDA Wednesday March 23, 2016

SPECIAL MEETING AGENDA

LOCATION: CITY MANAGER'S CONFERENCE ROOM, CITY HALL, 300 FOREST AVE., 2nd FLOOR

NEXT MEETING: The next regular meeting is scheduled for Wednesday May 11, 2016.

The Mission of the Pacific Grove Museum of Natural History is:
To inspire discovery, wonder, and stewardship of our natural world.

5:00 p.m.

CALL TO ORDER – Welcome New Board Members Hewitt and Oder

1. **APPROVAL OF AGENDA**
2. **PUBLIC COMMENTS**
3. **APPROVAL OF MUSEUM BOARD MEETING MINUTES**
 - A. Minutes of the October 28, 2015 and January 13, 2016 Museum Board meetings
Reference: Tama Olver, Secretary
Recommended Action: Approve Minutes

REGULAR AGENDA

4. **REPORTS NOT REQUIRING ACTION**
 - A. Correspondence
Reference: Tama Olver, Secretary
Recommended Action: Accept Correspondence.
 - B. City Council Liaison Comments
Reference: Councilman Huitt
Recommended Action: Hear Comments.
 - C. Museum Director's Monthly Report
Reference: Jeanette Kihs
Recommended Action: Accept Reports for December 2015 and January 2016.

D. City Manager's Report
Reference: Interim City Manager Harvey
Recommended Action: Hear Report

E. Board Chair's Report
Reference: Board Chair Pearse
Recommended Action: Hear Report

5. UNFINISHED BUSINESS

- A. Museum Tour for Interim City Manager
Reference: Tama Olver, Secretary
Recommended Action: Hear status of action suggested at the October 2015 meeting.
- B. Audited Financial Statements 2014-2015
Reference: Tama Olver, Secretary
Recommended Action: Hear report regarding any City Council discussion when they accepted the reports.

6. NEW BUSINESS

- A. Approval of slate of officers for 2016
Reference: Tama Olver, Secretary
Recommended Action: Nominate and approve slate(s) of officers for 2016.
- B. Election of officers for 2016
Reference: Tama Olver, Secretary
Recommended Action: Elect Chair, Vice-Chair, and Secretary.
- C. Annual Compilation of Statistics from Museum Director Monthly Reports
Reference: Tama Olver, Secretary
Recommended Action: Review 2015 statistics compiled by Executive Director Kihs and decide any needed action.

ADJOURNMENT

<p>The City of Pacific Grove does not discriminate against persons with disabilities. City Hall is an accessible facility. A limited number of devices are available to assist those who are deaf or hard of hearing.</p>



ACTION MINUTES

CITY OF PACIFIC GROVE MUSEUM BOARD

Wednesday October 28, 2015

Special Meeting (in lieu of regular meeting of November 11) 5:00 P.M.
City Manager's Conference Room – City Hall – 300 Forest Avenue, Pacific Grove, CA

SPECIAL MEETING

5:00 p.m.

CALL TO ORDER

Chair John Pearse, Secretary Tama Olver, Board Members Blake Matheson and Heidi Zamzow, City Council Liaison Robert Huitt, Executive Director Jeanette Kihs, and Curator of Collections Paul VandeCarr present. City Manager Tom Frutcheby absent. Member of the public Broeck Oder present.

1. APPROVAL OF AGENDA

Blake Matheson moved and John Pearse seconded that the agenda be approved with item 5.B to follow item 3 and noting that the second item 6.C should be 6.D. The motion passed unanimously 4/0.

2. PUBLIC COMMENTS

Broeck Oder was introduced by Board Member Zamzow. He noted that he was present to observe proceedings and expressed interest in the possibility of joining the board.

3. APPROVAL OF BOARD MEETING MINUTES

A. John Pearse moved and Heidi Zamzow seconded that the minutes be approved with correction of a typo and use of the proper name of the "Lovers Point-Julia Platt State Marine Reserve." The motion passed unanimously 4/0.

5.B CARE OF COLLECTION ITEMS AT THE PT. PINOS LIGHTHOUSE

Curator of Collection VandeCarr reported that a meeting regarding the topic had not yet taken place. Council Liaison Huitt stated that he would follow up.

REGULAR AGENDA

4. REPORTS NOT REQUIRING ACTION

A. Correspondence.

Secretary Olver stated that no correspondence had been received.

B. City Council Liaison Comments

Councilman Huitt noted that an item regarding the city's financial commitment to the Museum would be on the agenda of the November 4 meeting of the City Council. It was agreed that Chair Pearse and Secretary Olver would attend along

with any other available members of the Board. Councilman Huitt noted that it might be feasible to have the Board's 2015 report and 2016 plan on the same agenda as background for the discussion.

- C. Museum Director's Monthly Reports for August and September, 2015
Chair Pearse noted that education activity and community partnerships at the Museum continue to increase. Board Member Matheson suggested that attendance numbers for groups hosted by the Museum be included in reported statistics. Executive Director Kihs noted that the Museum Foundation goes beyond its obligations under the Lease and Operating Agreement, specifically by funding facilities improvements. Board Member Matheson suggested that the "hard" dollar value of the Foundation's standards for upkeep of the facility be highlighted in reports. After agreeing that there is an opportunity for community education about what it takes to operate the Museum, the Board accepted the reports by consensus.
- D. City Manager's Report. None.
- E. Board Chair's Report
Chair Pearse noted that management of the collection has improved significantly since the transition to a public/private partnership. He also recommended participation in the Natural History Book Club, open to museum staff, members, and volunteers.

5. UNFINISHED BUSINESS

- A. Exhibit and Business Plans for 2015-2016
The Board commented on the reports and reached consensus on the following observations:
 - 1. It is helpful to the public to distinguish the City Museum Board from the Foundation Museum Board.
 - 2. In the list of partners, "Monterey Bay National Marine Sanctuary Exploration Center" should replace "NOAA" as a clarification.Board Member Matheson educated the board on cultural sensitivity to the name "Digger Pine" and recommended that it be replaced by "Gray Pine" in all references by the city, Museum, and this board. Olver so moved, Matheson seconded, and the motion passed unanimously 4/0.

Board Member Olver moved, and Matheson seconded that a subcommittee of Olver and Zamzow perform a final edit on the following comments and that the result be forwarded to the City Council as the recommendation of the Museum Board regarding the Exhibit and Business Plans:
 - 1. The Board finds the Exhibit Plan compelling and in support of the mission of the Museum.
 - 2. The Board has a high degree of confidence that attendance has increased after a change in methodology for counting attendance.
 - 3. Admission charged is covering the cost of hiring someone to be at the door.
 - 4. The City is getting value, including care of the collection and facility, in excess of the City's financial contribution.
 - 5. The Board recommends that the City Council accept the reports.The motion passed unanimously, 4/0.

6. NEW BUSINESS

- A. Museum Board Report to the City Council 2015
The board approved the report, to be updated by the Secretary to reflect attendance at the October meeting, by consensus.
- B. Museum Board Plan for 2016
Chair Pearse moved and Board Member Matheson seconded approval of the 2015 Report and 2016 plan and that the reports be forwarded to the City Council. The motion passed unanimously, 4/0.
- C. Availability of Museum Board materials to the City Council
Secretary Olver reported that several items that were intended to be forwarded by the Board to the City Council failed to appear on Council agendas in 2015. The Board agreed, by consensus, to submit all those items (including the report for 2014, the plan for 2015, and minutes of meetings not previously on the agenda) as a package for the next possible City Council meeting. Secretary Olver committed to put a process in place that ensures inclusion of forwarded items in the Council agenda in the future.
- D. Agenda Overview for 2016
Chair Pearse noted that the dates of scheduled regular meetings needed to be corrected. The board approved the corrected overview by consensus.

ADJOURNMENT

The meeting adjourned at 6:46 p.m.

Respectfully Submitted, Tama Olver, Secretary



ACTION MINUTES

CITY OF PACIFIC GROVE MUSEUM BOARD

Wednesday January 13, 2016

Regular Meeting 5:00 P.M.

City Manager's Conference Room – City Hall – 300 Forest Avenue, Pacific Grove, CA

REGULAR MEETING

5:07 p.m.

CALL TO ORDER

Chair John Pearse, Secretary Tama Olver, Board Member Heidi Zamzow, City Council Liaison Robert Huitt, Curator of Collections Paul VandeCarr and acting city manager Jocelyn Francis present. Board Member Blake Matheson has decided not to apply for another term as a member of the board and is very sincerely thanked for his service.

1. APPROVAL OF AGENDA

The agenda was approved by consensus.

2. PUBLIC COMMENTS

There were no members of the public present.

3. APPROVAL OF BOARD MEETING MINUTES

- A. The minutes of the October 28 meeting as distributed were missing content. Review and approval is carried forward to the next meeting.

REGULAR AGENDA

4. REPORTS NOT REQUIRING ACTION

- A. Correspondence.

Secretary Olver stated that no correspondence had been received.

- B. City Council Liaison Comments

Councilman Huitt noted that new appointments to boards and commissions would be made before our next meeting. He reported that during review of the city's financial commitment to the Museum at the November 18 meeting, council members' comments were generally positive and supportive. Financial support continues. He also noted that the Interim City Manager, Ben Harvey, is very interested in learning about the Museum. He suggested that it would be worthwhile to arrange a tour for him.

- C. Museum Director's Monthly Reports for October and November, 2015

Board Member Olver noted that Executive Director Kihs had been promptly responsive to a request to include attendance at hosted meetings in the report. The artwork installation at City Hall has been completed with funding help from the city.

Ultraviolet film was installed on windows to protect the artwork. Security for the items is the responsibility of the city. Heidi Zamzow moved to accept the report, John Pearse seconded, and the motion passed unanimously 3/0.

- D. City Manager's Report. Councilman Huitt noted that the Interim City Manager would be sworn in on January 20, 2016.
- E. Board Chair's Report
Chair Pearse noted he had nothing to report.

5. UNFINISHED BUSINESS

- A. Availability of Museum Board Materials to the City Council
Secretary Olver reported that materials from our meetings in 2015 had not fully been included in City Council meeting agendas. The board agreed by consensus to forward all missing materials (including the 2014 report, 2015 plan, and minutes of several meetings) for inclusion in the consent agenda for the next possible City Council meeting.
- B. Museum Board Report to the City Council 2015 and Plan for 2016
Secretary Olver reported that the report and plan were approved as part of the consent agenda with no comment.
- C. Care of Collection Items at the Pt. Pinos Lighthouse
Paul vandeCarr reported that materials from our meetings in 2015 had not fully been included in City Council meeting agendas. The board agreed by consensus to forward all missing materials (including the 2014 report, 2015 plan, and minutes of several meetings) for inclusion in the consent agenda for an upcoming City Council meeting.

6. NEW BUSINESS

- A. Audited Financials for 2014-2015
After discussion, Tama Olver moved, and John Pearse seconded, that the report be accepted. The motion passed unanimously 3/0. John Pearse move and Tama Olver seconded that the report be forwarded to the City Council noting: the financial reports of the Museum for 2014-2015 received a clean audit report. The motion passed unanimously, 3/0.

ADJOURNMENT

The meeting adjourned at 6:07 p.m.

Respectfully Submitted, Tama Olver, Secretary



**Pacific Grove Museum of Natural History
Director's Report
December 2015**

I. Executive Summary

The Museum was chosen to take part in Monterey County GIVES!, a program whereby local non-profits received funds donated through the Community Foundation and Monterey County Weekly. The Museum will receive approximately 14% over and above the \$54,000 donated to the Museum.

Over 7,000 visitors flocked to the Monarch Sanctuary during December, which was slightly lower than December 2014 visitors. Less Monarchs overwintered at the Sanctuary also with about 10,500 counted in December. Although there were less Monarchs in Pacific Grove, numbers increased in other parts of California.

The Museum added part-time staff members to welcome guests on Saturdays, replacing a current employee who is no longer available on Saturdays. The new staff members will rotate Saturdays.

Visitation and Visitor Experience	December 2015
Museum Visitation	Guests – 1,632 Science Saturday – N/A Lecture- 154 Attendees Meetings- 3 Attendees Birthday Parties- 20 Member holiday event-17 Facility Rental- 97 Attendees Field Trips- 484 Other Groups- 27 Total Volunteer Count: 66 TOTAL- 2,500 LIMPETS (off-site)- 43 MPUSD (off-site)- 374 Aquarium (off-site) 3,216 TOTAL served by Museum services (on and off-site)- 6,133
Monarch Sanctuary Visitation	Guests – 7,032

II. Exhibitions

Exhibits	December 2015
Permanent Exhibitions	<ul style="list-style-type: none"> Monterey pine donated by Pebble Beach Co. and planted by Bruce Cowan to replace pine removed earlier in year. One exhibit case removed from mezzanine level as partial preparation for

Exhibits	December 2015
Special Exhibitions	<p>Geology exhibit opening in late January.</p> <ul style="list-style-type: none"> Displays removed from three exhibit cases on mezzanine level in preparation for Geology exhibit. Text panel about Threatened and Endangered Birds of Monterey County added to Santa Catalina students' painting exhibition.

III. Education

Education	December 2015			
School Group Visits	<ul style="list-style-type: none">Lincoln ElementaryBay View AcademyAromas SchoolRobert DownSanta Rita SchoolForest GroveDual Language AcademyStevensonForest GrovePacific Grove Youth Center	Salinas Monterey Aromas Pacific Grove Salinas Pacific Grove Seaside Pebble Beach Pacific Grove Pacific Grove	40 48 55 23 144 23 88 25 23 15	
	Aquarium Home School Days		3,216	
	Total: 3,700			
Other Group Visits	<ul style="list-style-type: none">Group Tour-21Windsor Living- 6			
	Total: 27			
Science Saturday	<ul style="list-style-type: none">N/A			
Group Outreach Programs/Kits	Stevenson School	Museum Collection Items	Pebble Beach	
	<ul style="list-style-type: none">Number of kits checked out: 1			
	Total Outreach: 0 students			

Education	December 2015
Lectures	<ul style="list-style-type: none"> • “The Drunken Monkey” lecture presented by Robert Dudley; 44 attendees • “Edge of the Sea” lecture presented by David Shonman; 29 attendees • Ed Ricketts Lecture / Book Signing: 81 attendees Total Lectures: 3 Total Attendees: 154
Museum Meetings	<ul style="list-style-type: none"> • Volunteer Orientation Meeting- 3 Total: 1 Total Attendees: 3
Birthdays	1 Total Attendees: 20
Facility Rental	Total Attendees: 97
Member Event	Total Attendees: 17
LiMPETS	<ul style="list-style-type: none"> • Santa Catalina School – 15 High School Students • Monterey County Home Charter School – 25 Middle and High School Students • Student Oceanography Club – 3 Middle School Students Total Participants: 43
MPUSD	<ul style="list-style-type: none"> • Marina Vista 12/1/15 52 • Del Rey 12/3/15 64 • Olsen 12/4/15 62 • Monte Vista 12/7/15 61 • Marshall 12/8/15 74 • Foothill 12/10/15 61 Total Students 374

IV. Marketing and Promotions

Marketing & Promotions	December 2015
Web	<ul style="list-style-type: none"> • Website Visits – 11,030 • Page Views – 18,787

Marketing & Promotions	December 2015
Marketing/Public Relations	<ul style="list-style-type: none"> • Doc Ricketts book signing in Cedar Street Times • Drunken Monkey lecture in Cedar Street Times • Museum mentioned and listed in MC Gives insert in Monterey Weekly https://goo.gl/j9rFLD • Drunken Monkey featured in Monterey Weekly “Quick Bites:” http://goo.gl/QTQI9Z • Museum mentioned in Monterey County Now – from the Monterey County Weekly: http://goo.gl/YvvMzL • Museum and monarchs mentioned in Monterey County Now – part of the Monterey County Weekly: http://goo.gl/eU5cU7 • Monarchs mentioned in front page Monterey Herald story: http://goo.gl/wfQ2bS • Santa Catalina School Exhibit in the Monterey Herald’s Art Openings: http://goo.gl/MTBBJf

VII. Personnel & Volunteers

Personnel	December 2015
Volunteers	<ul style="list-style-type: none"> • Museum Docent Volunteers worked 113.32 hours • Museum Garden Volunteers worked 20.77 hours • Museum Project & Events volunteers worked 52.78 hours • Museum Store Volunteers worked 97.17 hours • Museum Tour Group volunteers worked 2.58 hours • Monarch Sanctuary volunteers worked 187 hours • School Groups volunteers worked 19.73 hours • Science Saturday volunteers worked: 7 <p>Total Volunteer Hours: 500.35 hours Total Volunteer Count: 66</p>
Volunteer Orientation/Enrichment	<ul style="list-style-type: none"> • Volunteer Information Meeting , 3 attendees • Volunteer Orientation N/A • Total New Volunteers: 3 <p>Total Volunteers Attending Enrichments: 0</p>

VI. Organizational Updates

Organizational Updates	December 2015
Staff	<ul style="list-style-type: none"> • Mitch Gravelle - Guest Services Hire Date: 12/15/15 • Jane Thompson - Guest Services Hire Date: 12/12/15

VIII. Collections

Conservation & Collections	December 2015
Management	Collections Management: <ul style="list-style-type: none"> • Deinstalled Jade exhibit case from Mezzanine and returned loaned items from display. • Installation of new upcoming event signage in lobby. • Assisted in relocating Ed collection and preparing Education room for new flooring installation. • Received donation of large insect collection. • Updated PastPerfect online with approximately 50 additional records and photographs. • Worked with photographer to digitize 10 paintings from the Museum's collection for reproductions, and submitted files to local printer for installation at PG City Hall. • Regular repairs and maintenance of Museum exhibits (light bulbs, damaged text panels, etc.). • Continue working with Volunteer on scrapbooking/archive project.
Conservation	Conservation: <ul style="list-style-type: none"> • Monthly check of Temperature/relative humidity levels and pest activity. • Updated database with object location changes, photos, and condition reports.

IX. Facility and Risk Management

Facility and Risk Management	December 2015
Repairs / Upgrades	<ul style="list-style-type: none"> • 12/4/15 – Women's Public Restroom: lock is broken in the door of the first stall. Repaired • 12/4/15 – Garden: Pathway light broken and laying on its side: Repaired • 12/4/15 – Acrylic overhang above entrance have blown off. Repaired. • 12/11/15 – Lobby Doors: Doors leading to the garden are leaking during the rain, significant amount of water inside of door. Not repaired • 12/12/15 – Women's Public Restroom: Toilet in the 1st stall clogged. Volunteer repaired. • 12/14/15 – Administrative Offices Restroom: toilet seat is broken. Repaired.

**Pacific Grove Museum of Natural History
Director's Report
January 2016**

I. Executive Summary

Every program and department was bustling with activity in January. We hosted 735 students for field trips in the Museum, including students from Wisconsin, Livermore, Sacramento, Salinas, and more. Almost 600 people visited the Museum for our free Science Saturday event. This month the topic was "Migrations." Museum education programs served 929 students outside of the museum walls through our LiMPETS program and a collaborative program with the Monterey Peninsula Unified School District.

Our new geology exhibit, located on the mezzanine, opened in late January and features a thorough explanation of the unique geology of the Central Coast. Dr. Ed Clifton spoke in a lecture, "Life on the Edge" which attracted 130 visitors. We hosted a reception featuring paintings of California threatened and endangered birds by student artists from Santa Catalina School. Further, we installed a few collection paintings and a number of reproductions of collection paintings in in City Hall for the enjoyment of all who visit there.

Thanks to the generosity of a local Foundation, the old linoleum floor in the downstairs Education/Multi-purpose room was removed and new laminate flooring was installed.

II. Visitation

Visitation and Visitor Experience	January 2016
Museum Visitation	Guests – 1,534 Science Saturday – 564 Lecture- 138 Attendees Meetings- 113 Attendees Birthday Parties- 142 Museum Special Events- 50 Attendees Field Trips- 735 Other Groups- 95 Volunteer enrichments - 52 TOTAL- 3,423 LiMPETS (off-site)- 242 MPUSD (off-site)- 687 TOTAL (on and off-site)- 4,352
Monarch Sanctuary Visitation	Guests – 7,464

III. Exhibitions

Exhibits	January 2016
Permanent Exhibitions	<ul style="list-style-type: none"> New geology exhibit installed in three display cases on mezzanine Entryway planter beds prepared for re-planting
Special Exhibitions	<ul style="list-style-type: none"> Reception held for Santa Catalina Upper School students who painted threatened and endangered birds

IV. Education

Education	January 2016
School Group Visits	<ul style="list-style-type: none"> Lincoln Elementary- Salinas- 120 Sacred Heart- Salinas -34 Castroville- Castroville- 80 Girl Scouts- Livermore – 18 Toro Park – Salinas -80 Bentley School – Lafayette- 29 Presidio of Monterey-Seaside- 25 Loma Vista- Salinas -75 Oasis Charter School- Salinas -75 Wisconsin School - 21 Toro Park – Salinas -100 Mission Ave. – Sacramento 68 Chartwell- Seaside- 10 <p>Total: 735</p>
Other Group Visits	<ul style="list-style-type: none"> San Carlos Adult Community -40 American Society of Naturalists- 20 Monarch Teacher Network- 20 MPC-15 <p>Total: 95</p>
Science Saturday	<ul style="list-style-type: none"> Migration Madness: 564
Group Outreach Programs/Kits	Number of kits checked out: 0

Education	January 2016				
Lectures	<ul style="list-style-type: none"> • “Geology on the Edge,” presented by Ed Clifton; 130 attendees Natural History Book Club • Discussion of “The Invention of Nature: Alexander von Humboldt’s New World,” 8 participants Total Lectures: 1 Total Attendees: 130				
Meetings	<ul style="list-style-type: none"> • Gem and Mineral Society -50 • Audubon Society - 20 • California Native Plant Society- 35 • Volunteer Orientation Meeting-8 Total: 3 Total Attendees: 113				
Birthdays	3				
Museum Events	Total Attendees: 142 Endangered Bird Event- 50 Total Attendees: 50				
LiMPETS	<ul style="list-style-type: none"> • Santa Catalina School – 45 high school students • Student Oceanography Club – 3 middle school students • Point Lobos Docents – 10 adult volunteers • Aptos High School – 66 high school students • International School of the Peninsula – 50 middle school students • Girls' Middle School – 10 middle school students • Union Grove Elementary School – 18 elementary/middle school students • Pacific Grove High School – 40 high school students • Total Participants: 242 				
MPUSD	<table> <tr> <td> <ul style="list-style-type: none"> • Ord Terrace 74 • Highland 87 • Olson 58 • Crumpton 53 • King 71 • La Mesa 49 </td><td> <ul style="list-style-type: none"> • Marina Vista 51 • Del Rey • Monte Vista 59 • Olson 58 • Marshall 74 • Foothill 53 </td></tr> <tr> <td colspan="2">Total Students: 687</td></tr> </table>	<ul style="list-style-type: none"> • Ord Terrace 74 • Highland 87 • Olson 58 • Crumpton 53 • King 71 • La Mesa 49 	<ul style="list-style-type: none"> • Marina Vista 51 • Del Rey • Monte Vista 59 • Olson 58 • Marshall 74 • Foothill 53 	Total Students: 687	
<ul style="list-style-type: none"> • Ord Terrace 74 • Highland 87 • Olson 58 • Crumpton 53 • King 71 • La Mesa 49 	<ul style="list-style-type: none"> • Marina Vista 51 • Del Rey • Monte Vista 59 • Olson 58 • Marshall 74 • Foothill 53 				
Total Students: 687					

V. Marketing and Promotions

Marketing & Promotions	January 2016
Web	<ul style="list-style-type: none"> • Visits – 9,746 • Page views – 21,138

Marketing & Promotions	January 2016
Marketing/Public Relations	<ul style="list-style-type: none"> • Volunteer Information Meeting featured in the Cedar Street Times • Living on the Edge lecture featured in Cedar Street Times • Santa Catalina Endangered Birds Art Reception featured in Monterey Herald's Arts and Entertainment section: http://goo.gl/hFSmq6 • Santa Catalina Endangered Birds Art Reception featured in Monterey County Weekly: http://goo.gl/K9PfNE • Paper monarchs display mentioned in Sacramento Bee events: http://goo.gl/DHa3AN • Mentioned in The Californian's Whalefest article: http://goo.gl/6UwHhG

VI. Personnel & Volunteers

Personnel	January 2016
Volunteers	<ul style="list-style-type: none"> • Museum Docent Volunteers worked 103.57 hours • Museum Garden Volunteers worked 11.3 hours • Museum Project & Events volunteers worked 32.98 hours • Museum Store Volunteers worked 89 hours • Monarch Sanctuary volunteers worked 167.5 hours • School Groups volunteers worked 25 hours • Science Saturday volunteers worked: 65.28 <p>Total Volunteer Hours: 494.63 hours Total Volunteer Count: 55</p>
Volunteer Orientation/Enrichment	<ul style="list-style-type: none"> • Volunteer Information Meeting: 8 attendees • Volunteer Orientation: 5 • Total New Volunteers: 5 • Museum informational meeting: 47 <p>Total Volunteers Attending Enrichments: 52</p>

VII. Organizational Updates

Organizational Updates	January 2016
Staff	N/A

VIII. Collections

Conservation & Collections	January 2016
----------------------------	--------------

Conservation & Collections	January 2016
Management	Collections Management: <ul style="list-style-type: none"> • Deinstalled PPIE Centennial exhibit. Returned items on loan • Installed new revised Otter exhibit case • Installed artwork/reproductions at City Hall • Attended openings at City Hall and for Santa Catalina student paintings for PGMNH • Updated PastPerfect online with approximately 30 additional records and photographs • Began photographing, researching and selecting weapons for March Member's event • Assisted researchers looking for information about the J.B. Stetson, Al Page collection, Tuttle collection, Native American beadwork, and Julia Platt. • Attended Museum advisory committee meeting and provided update on items on loan to Lighthouse. • Worked with Lepidopterist on new insect/butterfly displays for mezzanine.
Conservation	Conservation: <ul style="list-style-type: none"> • Monthly check of Temperature/relative humidity levels and pest activity. • Updated database with object location changes, photos, and condition reports. • Routine cleaning of objects performed

IX. Facility and Risk Management

Facility and Risk Management	January 2016
Repairs / Upgrades	<ul style="list-style-type: none"> • 1/4/16 – Floor replaced in downstairs education/multi-purpose room. Linoleum removed and replaced with new laminate flooring • 1/8/16 - Ladies Public Restroom - 1st stall door does not lock and toilet will not flush. Reported through the Web Request - #139528305

	2004	2005	2006	2007	2008	2009	2010	2011	2012	2013	2014	2015
J	4500	3850	3939	4346		3946	4850	4949	5143	5476	6075	3531
F	4737	4636	4321	4570			4924	6190	6079	6375	5954	3473
M	3645	4519		5075			5096	5680	6488	6091	6504	2259
A	7644		6832	6444		7724	8428	8846	7617	7175	10804	2935
M	4802	4853	4885	4470		3782	6802	7317	6568	6477	6363	2494
J		4620	4134			4358	6062	7401	6656	5593	4965	2513
J	5557	5051	3668			6005	6876	6331	6636	6713	5370	2372
A		4727				4078	6210	5832	5557	5884	4473	3417
S		3660	4402			3625	3625	5268	4495	4056	4416	1670
O		3955	4584			4261	7355	7014	6476	6731	7714	3277
N			6104			5430	6007	6169	5070	6824	6293	2744
D			5075				4164	4046	4638	4544	4172	2500

33185

Note 7 Note 1 2010 Native plan
Note 8 Note 2 First six months
Note 12 Note 3 2010 was a 52%
Note 1, Note 9 Note 4 2010 An estimat
Note 10 Note 5 2010 was a 70%
Note 6 Note 6 2010 Up from 54
Note 2, Note 11 Note 7 2011 was up fro
Note 3 Note 8 2011 25% increa
Note 4 Note 9 Annual Wildflow
Note 5 Note 10 2011 & 2012 Illu
Note 6 Note 11 2011 down from
Note 12 Note 12 2012 Monarchs
Note 13 Note 13 2012 MVSEVM E
2008 and 2009 are not available

Annual Visitation

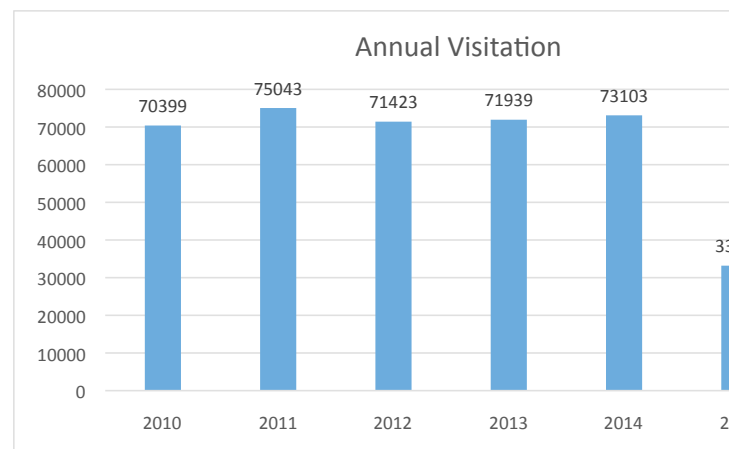
2004	2005	2006	2007	2008	2009	2010	2011	2012	2013	2014	2015
30885	39871	47944	24905	0	43209	70399	75043	71423	71939	73103	33185

Normalized Attendance/Average per month reported

2004	2005	2006	2007	2008	2009	2010	2011	2012	2013	2014	2015
5148	3987	4794	4981	0	3601	5867	6254	5952	5995	6091.9	2765

Year	Reported Visits	Science Sat	New Total	Mult. By Variable	Adj Visits	Science Sat	Total Adj Visits
2010	70399	5229	65170	46.40%	30239	2615	32854
2011	75043	2621	72422	46.40%	33604	1311	34915
2012	71423	5348	66075	46.40%	30659	2674	33333
2013	71939	7926	64013	46.40%	29702	3963	33665
2014	73103	7615	65488	46.40%	30386	4058	34444
2015	33185	4503	28682				28682

Note: Adjusted visitation based on variable rates in Jul-Dec 2014 attendance.
Science Sat. visitation adjusted by 50%.

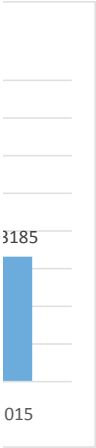
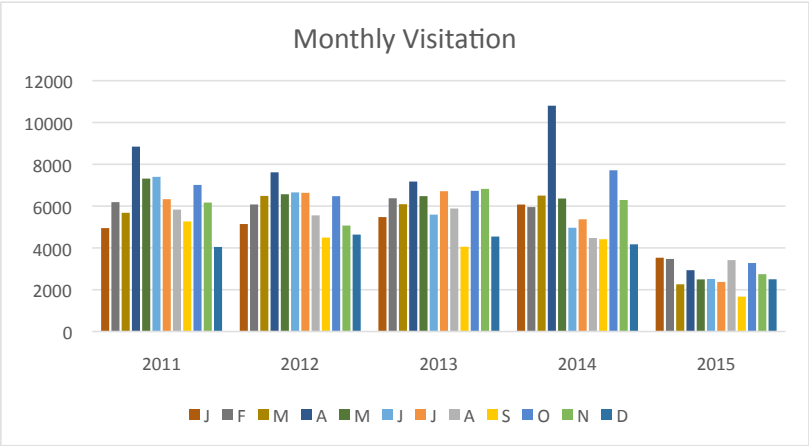


2008 and 2009 are not available in minutes of the Museum Board

- Note 1 2010 Native plant garden opened; Annual Wildflower Show
- Note 2 First six months 2010 increased 49% over 2009
- Note 3 2010 was a 52% increase over 2009 same period
- Note 4 2010 An estimate based on 2009
- Note 5 2010 was a 70% increase over 2009; Glow exhibit opened
- Note 6 2010 Up from 5430 in 2009
- Note 7 2011 was up from 4850 in 2009 despite no special exhibit in 2011
- Note 8 2011 25% increase over 2010; Living w/ Mountain Lions opened
- Note 9 Annual Wildflower Show
- Note 10 2011 & 2012 Illustrating Nature exhibit opened
- Note 11 2011 down from 2010 because of reduced publicity for Feast of Lanterns Event?
- Note 12 2012 Monarchs Come Home Opened in March
- Note 13 2012 MVSEVM Exhibit opened

2008 and 2009 are not available in minutes of the Museum Board

nt garden opened; Annual Wildflower Show
2010 increased 49% over 2009
increase over 2009 same period
e based on 2009
increase over 2009; Glow exhibit opened
430 in 2009
m 4850 in 2009 despite no special exhibit in 2011
ise over 2010; Living w/ Mountain Lions opened
rer Show
strating Nature exhibit opened
1 2010 because of reduced publicity for Feast of Lanterns Event?
Come Home Opened in March
xhibit opened
: in minutes of the Museum Board



	2010	2011	2012	2013	2014	2015
J	1863	3525	5065	4460	9026	15044
F	1324	2269	3523	4105	4091	7569
M		94	428	777	6	
A						
M						
J						
J						
A						
S						
O	1631	3262	2789		1908	3421
N	4020	5453	4291	11597	8771	6302
D	2607	5629	4466	7518	8100	7032

2011 Docents recorded a range of 3470-3580

Note: Visitation is estimated only during hours when docents are present.

Visits

	2010	2011	2012	2013	2014	2015
J	4	4	5	4	8	15
F	3	5	4	5	8	17
M	4	6	4	2	5	8
A	6	10	6	8	10	9
M	10	11	9	12	7	14
J	4	2	7	4	5	4
J	5	3	5	3	4	1
A	2	1	1	1	0	0
S	2	3	4	2	0	0
O	5	5	3	6	11	5
N	7	11	7	10	9	5
D	6	5	6	11	11	10
TOTAL	58	66	61	68	78	88

Students

	2010	2011	2012	2013	2014	2015
J	202	67	104	290	372	874
F	160	248	190	244	573	755
M	210	138	79	68	111	284
A	126	255	101	380	261	413
M	706	968	425	692	288	506
J	154	48	209	81	234	130
J	133	118	123	81	132	58
A	33	35	11	30		0
S	50	132	136	99		0
O	280	135	123	206	268	149
N	171	202	456	326	269	210
D	118	97	249	481	355	484
TOTAL	2343	2443	2206	2978	2863	3863

	2010	2011	2012	2013	2014	2015
Visits	58	66	61	68	78	88
	2010	2011	2012	2013	2014	2015

Students	2343	2443	2206	2978	2863	3863
----------	------	------	------	------	------	------

	# Tours	# Children	# Adults
Jan '15	2		20
Feb '15	2		60
Mar '15	1	25	
Apr '15	1		15
May '15	1	15	
Jun '15	2		42
Jul '15			
Aug '15			
Sep '15	3		43
Oct '15	1		32
Nov '15	1		50
Dec '15	2		27
J '14	4		85
F '14	3		63
M '14	1		20
A '14	2		39
M '14			
J '14			
J '14	1		10
A '14	2		12
S '14			
O '14	1	60	
N '14	3	135	
D '14			
J '13	1		40
F '13	1		44
M '13	6	144	
A '13			
M '13			
J '13	4		117
J '13	2		144
A '13	1		201
S '13			
O '13			
N '13	1		40

Annual Total |

329

Note: Museum tours and sanctuary tours were not reported separately

"10 parents with children"

D '13			
J '12	2		44
F '12	1		10
M '12	1	10	
A '12			
M '12			
J '12	1	22	
J '12	4	62	23
A '12	1	111	
S '12	1		32
O '12	4		142
N '12	3		120
D '12	2		79
J '11	3	30	20
F '11	4	20	105
M '11	2	98	54
A '11	3	0	80
M '11			
J '11	3	90	
J '11	1		21
A '11	2	65	
S '11			
O '11	4	55	25
N '11	1	13	10
D '11	2	6	90
J '10	5	22	49
F '10	1	0	42
M '10	1	45	4
A '10	2	12	12
M '10	1	0	18
J '10	1	0	40
J '10	1	0	18
A '10	3	0	112
S '10	2	0	39
O '10	3	0	63
N '10	1	0	24

586

One tour unknown #

450

405

D '10	2	0	40
-------	---	---	----

461

	# Events	# Children OR Total	# Adults
Jan '15	2	48	
Feb '15	2		
Mar '15	5		
Apr '15	4		
May '15	2		
Jun '15			
Jul '15			
Aug '15			
Sep '15	5		
Oct '15	2		
Nov '15	3		
Dec '15	1		
J '14	1	14	
F '14	0		
M '14	1		
A '14			
M '14	2	75	
J '14			
J '14			
A '14	1		
S '14	3		
O '14	1		
N '14	4	25	
D '14	2	52	
J '13			
F '13	1	81	
M '13			
A '13			
M '13			
J '13	1		
J '13			
A '13			
S '13	1		
O '13			
N '13	3	53	

reached not reported

reached not reported

reached not reported

reached not reported

reached not reported

reached not reported

D '13	2	25	
J '12	1	80	
F '12			
M '12			
A '12			
M '12			
J '12	1	22	
J '12			
A '12			
S '12	1	12	
O '12	1	15	
N '12	2	46	
D '12			
J '11	1	80	
F '11	2		
M '11			
A '11			
M '11			
J '11			
J '11			
A '11			
S '11	1		
O '11			
N '11			
D '11			
J '10	1	60	
F '10			
M '10			
A '10	1	20	8
M '10			
J '10			
J '10			
A '10			
S '10			
O '10	1	0	20
N '10			

D '10			
-------	--	--	--

	# Children or Total	# Adults
J '10 Coyotes & Kin	200	100
F '10 Waterbirds	80	40
M '10 World of fishes	700	
A '10 Bees, Wasps, ...	602	
M '10 Habitats	100	75
J '10 Light ... Photography	200	75
J '10 Habitats	100	75
A '10 Dinos and Fossils	200	100
S '10 Things that Glow	200	100
O '10 Creatures ... Night	1302	
N '10 Monarch Magic	980	
D '10		
J '11 Migrations	600	
F '11 Mt. Lions & ...		
M '11 Plants, Seeds, ...	110	
A '11 Basket Making ...		
M '11		
J '11 Trash to Treasure	175	
J '11 Chalk it Up!		
A '11 Rocks	636	
S '11 It's For the Birds		
O '11 Spiders & Snakes	1100	
N '11 Monarch Magic		
D '11		
J '12 Migrations	500	
F '12 Marvelous Mushrooms	1200	
M '12 Butterflies and Bees		
A '12 Flowers		
M '12		
J '12 Weather Wonders	406	
J '12 Insect Insanity	532	
Feast of Lanterns	534	
A '12 Fossils		
S '12 Birds of a Feather	500	
O '12 Spiders and Snakes	1115	

Annual Total

5229

50% 2614.5

2621

50% 1310.5

N '12 Monarch Magic	1061	
D '12		
J '13 Amazing Migrations	713	
F '13 Marvelous Mushrooms	750	
M '13 Bees, Wax, Honey, and Hives	692	
A '13 Wild for Flowers	350	
M '13		
J '13 Endangered Monterey	325	
J '13 Identification Day	504	
A '13 Rocks and Minerals	1124	
S '13 Sea Otters	663	
O '13 Snakes and Spiders	1414	
N '13 Monarch Magic	1391	
D '13		
Jan 14 Amazing Migrations	600	
Feb 14 Passenger Pigeons	400	
Mar 14 Bees, Wasps, Honey	800	
Apr 14 Identification Day	603	
May 14		
Jun 14 H2OhMy!	457	
Jul 14 Birds, Feather, Flight	689	
Aug 14 Dinosaurs & Fossils	868	
Sep 14 Sea Otters	700	
Oct 14 Spiders & Snakes	1800	
Nov 14 Monarch Magic	599	
Dec 14	0	
	7516	
Jan 15 Amazing Migrations	685	
Feb 15 Cool Cats	422	
Mar 15 Bees, Wasps, Honey	434	
Apr 15 Identification Day	246	
May 15		
Jun 15		
Jul 15		
Aug 15 Dinosaurs & Fossils	567	
Sep 15 Sea Otters	513	

5348

50%

2674

7926

50%

3963

Adjusted Numbers 2014	
Jan 14 Amazing Migrations	600
Feb 14 Passenger Pigeons	400
Mar 14 Bees, Wasps, Honey	800
Apr 14 Identification Day	603
May 14	
Jun 14 H2OhMy!	457
Jul 14 Birds, Feather, Flight	689
Aug 14 Dinosaurs & Fossils	868
Sep 14 Sea Otters	700
Oct 14 Spiders & Snakes	1800
Nov 14 Monarch Magic	599
Dec 14	0

Oct 15 Spiders	945	
Nov 15 Monarch Magic	691	
Dec 15		
	4503	

50%	300
50%	200
50%	400
50%	301.5
50%	0
50%	228.5
50%	344.5
50%	434
50%	350
50%	900
50%	
50%	0

3458.5

Nov-Act # 599

Actual 2014 **4057.5**

Note: A new website was launched March 6, 2010 and web statistics were unavailable in January and February during the transition.

	# Visits	# Pages/visit	# Page Views
J '10			
F '10			
M '10			
A '10	2212	2.96	6552
M '10	1767	3.14	5549
J '10	2149	2.88	6197
J '10	1958	3.32	
A '10	2230	3.12	7510
S '10	2798	2.96	8723
O '10	3586	2.96	10626
N '10	3662	2.85	10419
D '10	2391	3.06	7306
J '11	3526	3.15	11094
F '11	3355	3.15	10560
M '11	2914	3.08	8975
A '11	3312	2.91	9650
M '11	2625	2.82	7413
J '11	2149	2.88	6197
J '11	2261	2.96	6684
A '11	2413	3.07	7396
S '11	3141	3.05	9569
O '11	4168	2.96	12319
N '11	3492	3.05	10653
D '11	2862	2.94	8403
J '12	3600	3.3	11866
F '12	3437	3.21	11028
M '12	3306	3.19	10538
A '12	3152	3.11	9791
M '12	2844	3.07	8731
J '12	2737	3.05	8337
J '12	2578	3.03	7818
A '12	2752	3.31	9317

Glow exhibit opened

S '12	2817	3.6	9315
O '12	2567	3.6	9252
N '12	2948	2.81	8286
D '12	2680	2.77	7419
J '13	3424	2.9	9932
F '13	3374	2.86	9664
M '13	3669	2.86	10508
A '13	2762	3.85	10646
M '13	3046	2.6	7910
J '13	2877	2.56	7361
J '13	2765	3.21	8866
A '13	2339	3.53	8265
S '13	2514	3.26	8185
O '13	3647	3.2	11677
N '13	4130	3.18	13119
D '13	3773	3.21	12114
J '14	5660	3.23	18308
F '14	4512	3.24	14597
M '14	3758	3.2	12026
A '14	3493	3.18	11112
M '14	2751	3.23	8880
J '14	2715	3.11	8454
J '14	1351	3.18	4298
A '14	1351	3.18	4298
S '14	3490	2.54	8872
O '14	5168	2.55	13201
N '14	6351	2.37	15040
D '14	6179	2.3	14224
J '15	10281	2.19	22537
F '15	10179	2.14	21762
M '15	7990	2.06	16495
A '15	8790	2.02	17752
M '15	7488	2.04	15307
J '15	5781	2.19	12672
J '15	5640	2.21	12464
A '15	6107	2.19	13364

Note: July and August Numbers reported as the same

S '15	6967	2.23	15526
O '15	10505	2.27	23893
N '15	11402	2.11	24017
D '15	11030	1.7	18787

Began in May 2011

	# Classes	# Participants	Annual Total Participants
M '11	15	354	1479
J '11	4	84	
J '11	3	75	
A '11	6	257	
S '11	6	248	
O '11	7	211	
N '11	5	88	
D '11	3	162	
J '12	3	169	
F '12	7	148	
M '12	14	578	
A '12	5	145	
M '12	8	398	2981
J '12			
J '12	5	150	
A '12	2	38	
S '12	8	353	
O '12	9	467	
N '12	5	140	
D '12	9	395	
J '13	5	280	
F '13	9	301	
M '13	13	451	Adult group of 23 docents incl. Adults 44 Adults 10 Adults 4106 25 Adults 14 Adults
A '13	13	565	
M '13	14	571	
J '13	2	34	
J '13	4	138	
A '13	3	78	
S '13	8	534	
O '13	13	693	
N '13	16	292	
D '13	6	169	
J '14	9	167	
F '14	13	272	

M '14	16	422
A '14	16	520
M '14	13	577
J '14	12	310
J '14	9	227
A '14		
S '14	13	446
O '14	14	549
N '14	7	229
D '14	2	80
	# Classes	# Participants
J '15	7	190
F '15	9	279
M '15	22	986
A '15	11	577
M '15	9	586
J '15	8	137
J '15	8	181
A '15	3	46
S '15	7	400
O '15	12	630
N '15	12	515
D '15	3	43

24 Adults
3799

Annual Total Participants

18 educators
7 adults

28 adults
41 adults

10 adults
28 adults

4570

Note: Includes 117 volunteers for beach cleanup day

	Host/ Docent	Educ	Sci Sat.	Store	Garden	Monarch	Project	Enrichments/ Events	TOTAL
J '10	45.75	16		113	17	48.5			240.25
F '10	47.75	16		129	20	64			276.75
M '10	50.25	20		44.5	48	0			162.75
A '10		94.25		138	80	0			312.25
M '10		74.5		113	20	0			207.5
J '10		100		113	9	0			222
J '10		137.25		139.5	10	0			286.75
A '10		147.5		123	15	0			285.5
S '10		107		102	15				224
O '10		112				74.5			186.5
N '10		106		91		122.75			319.75
D '10		53		103		107.5	8		271.5
J '11		65.5	29.5	103		119	22.5		339.5
F '11		64	57.5	106	16.5	101.5	17.5		363
M '11		56.2	44	45	13.2	16.5	26		200.9
A '11		80	26	119.5	47.5		66.5		339.5
M '11		80.75		0	12.25		25	10	128
J '11		90.5		52.5	29		12	17	201
J '11		71.75	41.75	62				62.5	238
A '11		75.75	22	50			18		165.75
S '11		78.75	18.5	43.5			41.75		182.5
O '11		44.5	17.75	33.25		160.5	14.5		270.5
N '11		84.5	24.5	28.75		168.25	7.5		313.5
D '11	47			41		204.5	11.5		304
J '12	101.25		22.75	43.5		211.75	11.75		391
F '12	74		33	35		118.5	70.25		330.75
M '12	59		37	46.5			136.75		279.25
A '12	80.75			64.5			81.75		227
M '12	33			20	10.75		11		74.75
J '12	53.5			48.5	25		87		214
J '12	145			29.75	9.5		124		308.25
A '12	37			32.5	11.25		17.5		98.25
S '12	32.75			33	19.5	22	29.5		136.75
O '12	57.5			59.25	7	86.75	151.5		362

Note: Host, Education, & Garden reports

Note: Feb. 2011 details add up to more

Note: Science Saturday volunteers were

Note: The Museum Store was closed for

N '12	31.5			82.25	0	144	89		346.75
D '12	88.5			90	13.25	165.75	60		417.5
J '13	48			72	5.5	175.75	40		341.25
F '13	38.5			92.5	18	159	51.75		359.75
M '13	54			79	2	44	52.5		231.5
A '13	95			51	15.5		89.25		250.75
M '13	102			94	11.75		60.5		268.25
J '13	103			89	14		185		391
J '13	87.75			34	10.5		252.5		384.75
A '13	156			56.5	14.5		39		266
S '13	97.5			33	2		47.75		180.25
O '13	126.5			65.75	11.25		163.05		366.55
N '13	97.25			87.75	5	195.25	230.5		615.75
D '13	94			71	2.5	165.5	85.5		418.5
J '14	81.25			68	10	161.5	125		445.75
F '14	61.5			83.5	6.5	87.25	83.75		322.5
M '14	74.5			129.75	10	3	181.5		398.75
A '14	88			149.5	21.5		155.75		414.75
M '14	78			119.75	25		57.25		280
J '14	69.5			80	13.5		159.5		322.5
J '14	93.5			115	7.75		156.25		372.5
A '14	92.5			84	3.5		11.5		191.5
S '14	84.25			85	12		85.5		266.75
O '14	83			83.5	15	23.5	182.75		387.75
N '14	61.25			44	19.5	97.5	110.75		333
D '14	72.5			60	16.75	139	49.25		337.5

Note: Science Sat & Educ volunteer

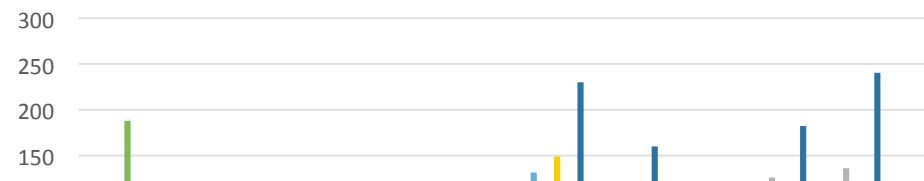
Note: Projects & Events volunteers

3024 1776 374.3 4406 722.2 3187.5 3796.8 17375

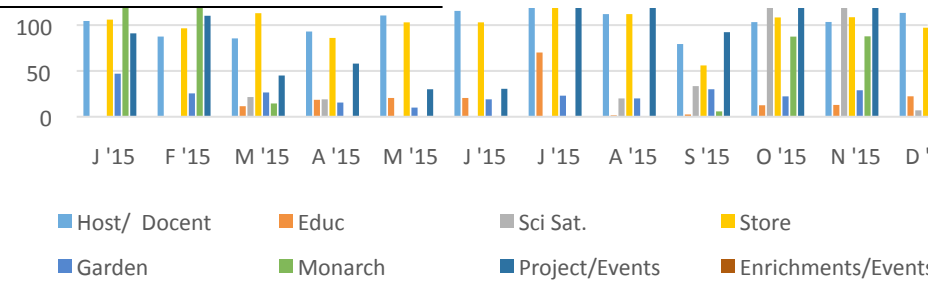
	Host/ Docent	Educ	Sci Sat.	Store	Garden	Monarch	Project/E vents	Enrichments/ Events	TOTAL
J '15	104.5			106	47	18			
F '15	87.5			96.5	25.5	120.			
M '15	85.5	11.5	21.5	113	26.5	14.			
A '15	93	18.5	19	86	15.5				
M '15	110.5	20.5		103	10				
J '15	115.5	20.5		103	19				
J '15	131.5	70.1		149	23				

Note: Host/Docent hours have variously
one of the columns is blank, you can gen

Volunteer Hours 2015



A '15	112	1.5	20	112	20	
S '15	79.35	2.5	33.43	56	30	5.8
O '15	103.26	12.54	126.12	108.36	22.24	87.4
N '15	103.43	12.9	136.2	108.6	28.9	87.7
D '15	113.32	22.31	7	97.17	20.77	18
2015	1239.4	192.85	363.25	1238.63	288.41	691.0
	2010	2011	2012	2013	2014	201
Hours	2995.5	3046.2	3186.3	4074.3	4073.25	533



Total by role

	Host/ Docent	Educ	Sci Sat.	Store	Garden	Monarch	Projects/ Events	Enrichments
Hours	4263.1	1968.6	737.5	5644.38	1010.61	3878.55	5119.25	0
% Total	24.5%	11.3%	4.2%	32.5%	5.8%	22.3%	29.5%	0.0%

ed together in October 2010 through January 2011, August through October 2011.
than the total reported; the higher number is reported here
reported separately beginning in January 2011
the month of May 2011

's not reported separately
reported as combined total

been combined with Education and with Garden volunteer hours over time. When
erally infer where the hours were reported.





'15

s

	# Events	# Volunteers
J '10		
F '10		
M '10		
A '10 Native Plants, Athens; Bringing Dead Stuff to Life, Covell	2	
M '10 Use of Discovery Carts	1	
J '10 Use of Volunteer Website	1	
J '10 Esselen Indians of Monterey	1	11
A '10 Health & Safety and Working with Youth	1	10
S '10 Pine and Oaks of Asilomar	1	12
O '10 Butterflies of the Native Plant Garden; Interpreting Monarch Butterflies	2	16
N '10 AAM Reaccreditation	1	
D '10 Geological Origins of the Monterey Peninsula	1	15
J '11 Fire extinguishers	1	
F '11 Mountain Lions	1	50
M '11 Interpreting Mountain Lions	1	12
A '11 Hands on Plants	1	
M '11 Community Surveys	1	
J '11 LiMPETS Program	1	
J '11 Beyond the Monarch: Other Backyard Butterflies	1	
A '11 Asilomar Dunes	1	6
S '11		
O '11		
N '11		
D '11		
J '12 Monarch Docent Best Practices	1	
F '12 Volunteer/Staff Introduction Meeting	1	
M '12 Monarchs Come Home Exhibit		
A '12		
M '12		
J '12		
J '12		
A '12 Monarch Docent Training	1	22
S '12		
O '12 Walkthrough MVSEVM exhibit		

N '12 New Volunteer Orientation; Monarch Docent Training	2	19
D '12		
J '13		
F '13 Orientation for New Volunteers	1	
M '13 New Volunteer, Monarch End-of-Season, Garden Vols.	3	
A '13 Orientation New Vols., Santa Lucia Pres. Hike, Interpretaton, Mammals	4	44
M '13 New Vol. Orientation; Birds; Monarchs; Native Plants	4	33
J '13 New vol. Orientation; Summer Camp Training	2	
J '13		
A '13		
S '13 Wings of Life screening at MBA (see Note below); Monarch Docent Meetings (2); Education Docent meeting	4	130 "Wings" 18 Training
O '13 New Vol. Orientation; Monarch Counting Workshop; Ohlone Santa Lucia Field Trip	3	10
N '13 New Vol. Orientation; Attend new exhibition	2	10
D '13 New Vol. Orientation; Basement Tours (2)	3	
J '13 Mid Season Monarch Meeting; New vol. training	2	
F '14 vol. orientation; vol info meeting; service learner orientation, Don Kohrs talk	4	33
M '14 vol. info meeting, new vol. orientation, end of Monarch season meeting	3	
A '14 new vol. orientation, lecture: birds	2	
M '14 new vol. orientation, vol. info meeting, lecture: rocks, lecture: monarchs	4	30
J '14 new vol. orientation, vol. training	2	5
J '14 new vol. orientation	1	3
A '14 vol. info meeting, no attendance reported	1	
S '14 vol. info meeting, vol. orientation	2	22
O '14 vol. info meeting, vol. orientation	2	12
N '14 vol. orientation	1	4
D '14 vol. orientation	1	3
Jan '15 volunteer info mtg	1	4
Jan '15 volunteer orientation	1	3

Jan '15 "state of the museum" for volunteers	1	48
Jan '15 garden volunteer meeting	1	6
Feb '15 volunteer info mtg	1	8
Feb '15 volunteer orientation	1	4
Feb '15 service learners mtg	1	6
Feb '15 Basketry exhibit training/enrichment	2	10
Mar '15 volunteer info mtg	1	2
Mar '15 volunteer orientation mtg	1	2
Apr '15 volunteer info mtg	1	4
Apr '15 volunteer orientation mtg	1	5
May '15 volunteer information mtg	1	2
May '15 volunteer orientation mtg	1	1
May '15 PPIE exhibit training	1	3
Jun '15 volunteer information mtg	1	7
Jun '15 volunteer orientation mtg	1	5
Jul '15 volunteer information mtg	1	5
Aug '15 volunteer information mtg	1	5
Sep '15 volunteer information mtg	1	6
Sep '15 volunteer orientation	1	9
Sep '15 service learner orientation	1	8
Oct '15 volunteer information mtg	1	12
Oct '15 volunteer orientation	1	10
Nov '15 volunteer information mtg	1	5
Dec '15 volunteer information mtg	1	3
Total volunteer meetings	27	183

	# Classes	# Students	# Class Hours	# Student Hours
Jan '15				
Feb '15				
Mar '15 California Naturalist Class	5	28 ea class		
Apr '15 California Naturalist Class	4	28 ea class		
Apr '15 Drawing Wildflowers, John Muir Laws	3	43		
Apr '15 Intro to Taxidermy	2	10 ea class		
May '15 Intro to Taxidermy	3	8 ea class		
May '15 Walk of Remembrance	1	45		
May '15 California Naturalist Class	3	28 ea class		
Jun '15 Sketching Nature with Erin Hunter	1	17		
Jun '15 Members Event-Tidepooling with John Pearse	1	11		
Jul '15				
Aug '15				
Sep '15 Natural History Book Club	1	16		
Oct '15				
Nov '15 Natural History Book Club	1	6		
Nov '15 Members Event-Geology Tour w/ Ed Clifton	1	27		
Dec '15 Members Event-Holiday Party	1	17		
J '14				
F '14				
M '14				
A '14 Identifying Plant Families, Sue Hubbard, Botanical Basics: An Introduction to Sketching Wildflowers, Erin Hunter, An Introduction to Sketching Wildflowers, John Muir Laws, Creating Native Microhabitat Pots, Chris Hauser	4	110		
M '14 Archaeology and Prehistory of the Monterey Bay Area, Gary Breschini & Trudy Haversat Science illustration demonstrations given by graduates of the CSUMB Science Illustration Program, Walk of Remembrance- celebrating Pacific Grove's Chinese fishing village	3	115		
J '14				
J '14				

A '14				
S '14 Film: The Great Tidepool	1	110		
O '14				
N '14 Member Geology Tour of Pt. Lobos	1	25 adults		
D '14				
J '13				
F '13				
M '13				
A '13				
M '13				
J '13				
J '13				
A '13				
S '13				
O '13 Monarch Monitoring Teacher Workshop	1	25 Adults		
N '13				
D '13				
J '12				
F '12				
M '12				
A '12				
M '12 California Naturalist Certification	1			
J '12				
J '12				
A '12				
S '12 Art and Nature: Drawing from the Collection	1	13		
O '12				
N '12				
D '12				
J '11				
F '11				
M '11 Drawing from the Collections	1	17		
A '11 Splashboard; Native Plant Dyes	2			
M '11 Drawing Natural Objects	1			
J '11				
J '11				

A '11				
S '11				
O '11 Drawing from the Collections	1	13		
N '11 Painting with Acrylics	1			
D '11 Introduction to Scratchboard				
J '10 Simple Machines; Drawing from the Collections; Introduction to Bird Watching	3	31	26	318
F '10	0	0	0	0
M '10	0	0	0	0
A '10 Simple Machines; Drawing from the Collections	2	22	13	115
M '10 Simple Machines; Drawing from the Collections	2	21	19	195
J '10				
J '10				
A '10				
S '10 Drawing from the Collections	1	5	12	60
O '10 It's a Blast! Rocketry		13		
N '10				
D '10				

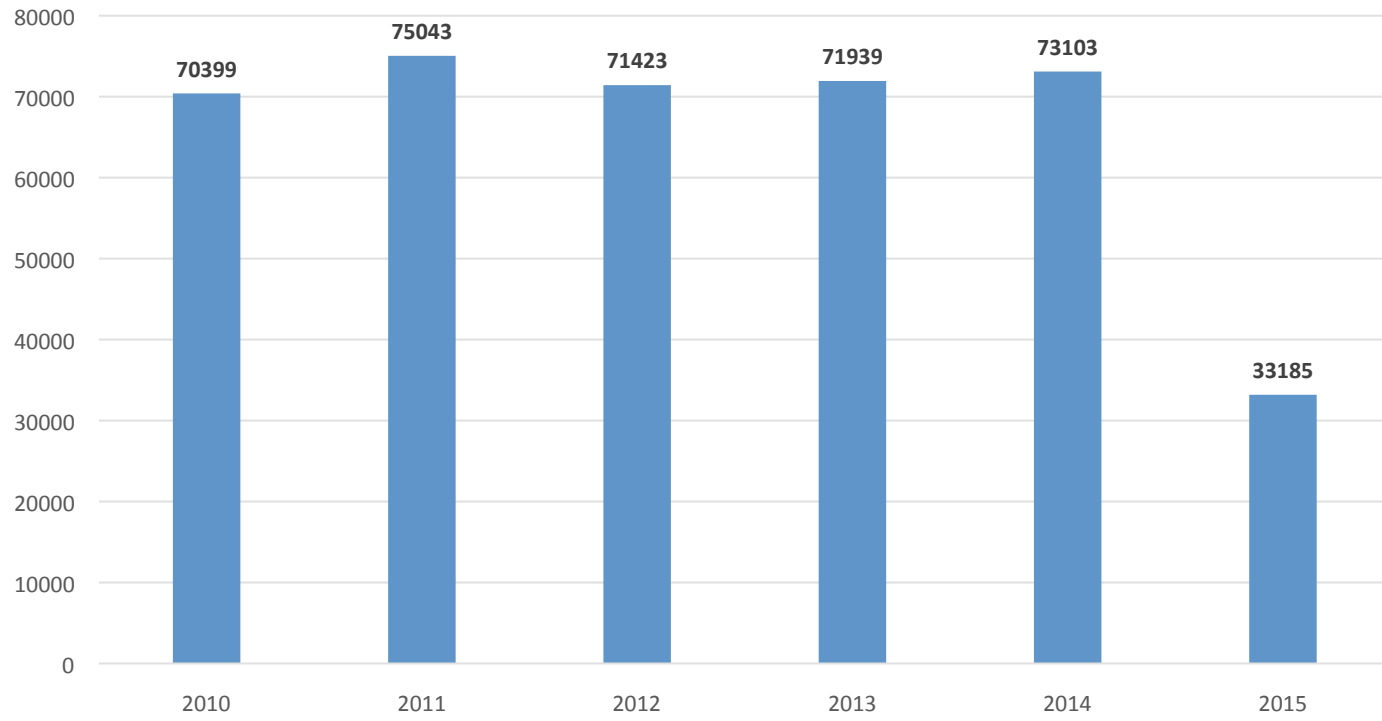
	# Lectures	# Attendees
J '10 Coexisting w/ Coyotes	1	130
F '10 Chasing Fishes ...	1	115
M '10 Fish Habitats; Owls	2	150
A '10 Science Art from ...	1	40
M '10 Humans, Nature, Birds	1	40
J '10		
J '10		
A '10		
S '10 Day on the Mtn; DeRome	2	85
O '10 Who Glows Below	1	70
N '10 Illuminating Fungi	1	60
D '10 Death & Life ...	1	60
J '11 Suicide Gene	1	70
F '11 Coexisting w/ Mt. Lions	1	200
M '11 Interpreting wildlife ...; Encountering Mt. Lions	2	110
A '11 Falling in love ... wildflowers; Jepson Manual; Monterey's Floral Bonanza	3	
M '11 Santa Cruz Mtn. Puma Project	1	
J '11		
J '11		
A '11		
S '11		
O '11 Green ... Seas & the Public; Conveying ... through Public Art; Measuring the Color of the Seas	3	190
N '11 Why did the Turtle cross the Pacific	1	45
D '11 Bridging the Pacific: The Japanese on the Monterey Peninsula, Thomas; Following Elephant Seals, Costa; From Sardines to Anchovies and Back in 50 Years, Chavez	3	
J '12 Sperm Whales	1	70
F '12 Hooved Mammals of California, Elliott	1	5
M '12		
A '12 Collection Obsession, King	1	
M '12 River in Ruin, March	1	60
J '12		
J '12		
A '12		
S '12 Overwintering Western Monarchs (Symposium)	1	20
O '12		

Note 1

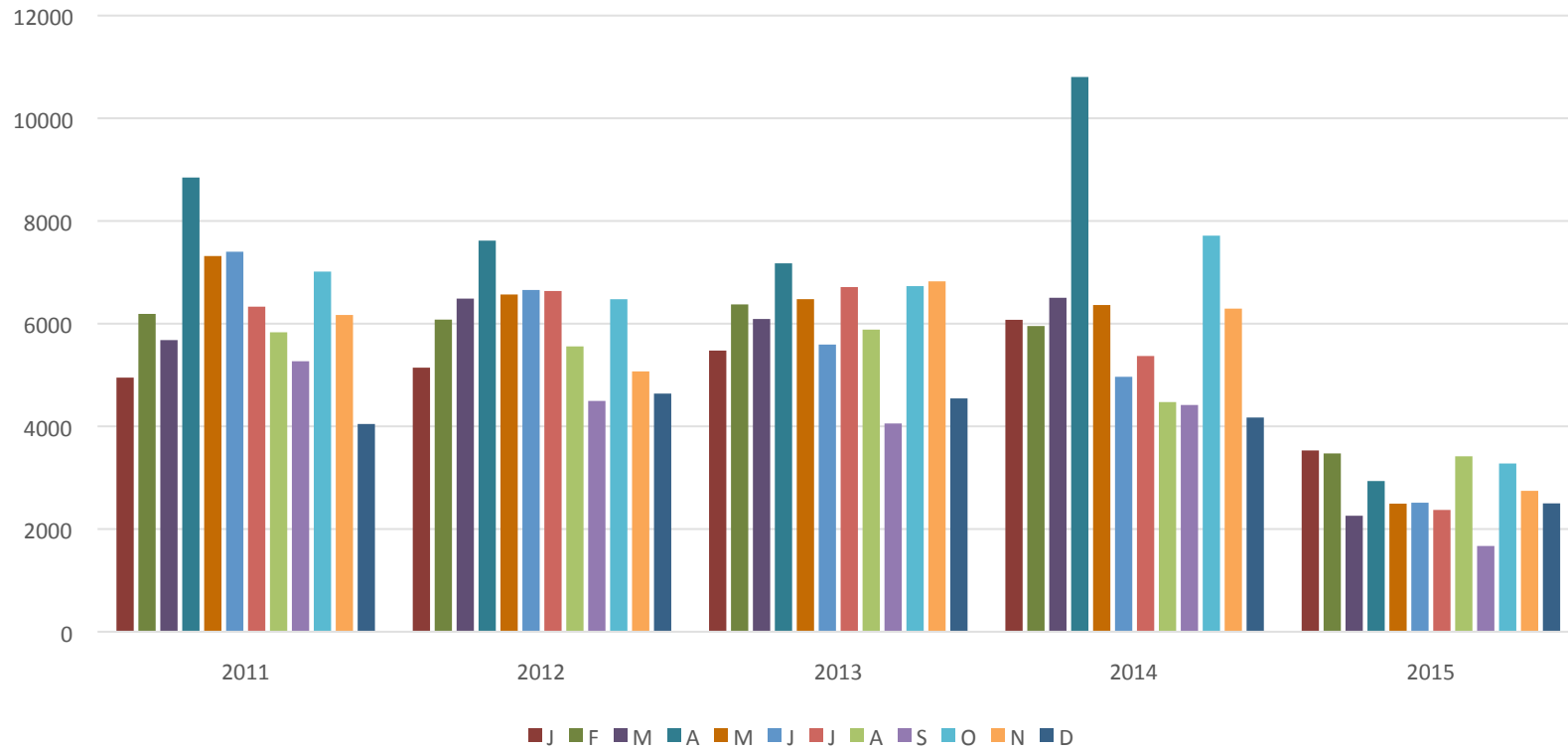
N '12		
D '12		
J '13		
F '13		
M '13		
A '13		
M '13 Pioneering Fishing Community of PG; Feeding the Hungry Ghosts, Lydon; After the Grizzly	3	
J '13 Passenger Pigeons, Back from Extinction, Noviak	1	
J '13 Observation and Ecology, Saragin	1	48
A '13		
S '13		
O '13		
N '13 At the Continent's Edge and Beyond, Shields; The West without Water, Ingram	2	175
D '13		
J '14 The Devil's Cormorant, Richard King; The Science Behind Stunning Central Coast Landscapes, Doug Smith	2	115
F '14 Ecology and Evolution of a Strange Soil, Susan Harrison; Passenger Pigeons: Back from Extinction?, Ben Novak	2	95
M '14 More Than Honeybees, Gretchen LeBuhn	1	30
A '14		
M '14 Archaeology and Prehistory of the Monterey Bay Area, Gary Breschini and Trudy Haversat	1	40
J '14		
J '14		
A '14		
S '14 A Future for Cheetahs, Laurie Marker	1	30
O '14 Natural History of CA Spiders, RJ Adams	1	25
N '14 Current Status of Condors on the Central Coast, Joe Burnett	1	30
D '14		
Total 2014	9	365
Jan '15 Calif Indian Basketry, Ralph Shanks	1	40
Feb '15 National Effort to Save Monarch Butterflies, Serina Jepsen	1	40
Mar '15 From Wavetop to Ridgetop: Life History of Steelhead in Central Calif.	1	40
Apr '15 Identifying Plant Families, Sue Hubbard	1	61
Apr '15 Wildergarten: A Case Study in Plant Restoration	1	8

Apr '15 Native Plant Gardening in Pots, Patrick Regan	1	28
Apr '15 Revising the Monterey Flora, Michael Mitchell	1	15
Jun '15 A Visit to Jewel City, PPIE, Tim Thomas	1	39
Jul '15 Carmel River, Then and Now, Ray March	1	45
Aug '15 Mammoth in the Artichokes, Mark Hylkema	1	91
Oct '15 Whirlwind Tour of the PPIE, Laura Ackley	1	45
Nov '15 The Sanderling, Film presentation by Steve and Mary Albert	1	40
Dec '15 The Drunken Monkey, Robert Dudley	1	44
Dec '15 Edge of the Sea, David Shonman	1	29
Dec '15 Ed Ricketts Lecture & Book Signing	1	81
Total 2015	15	646

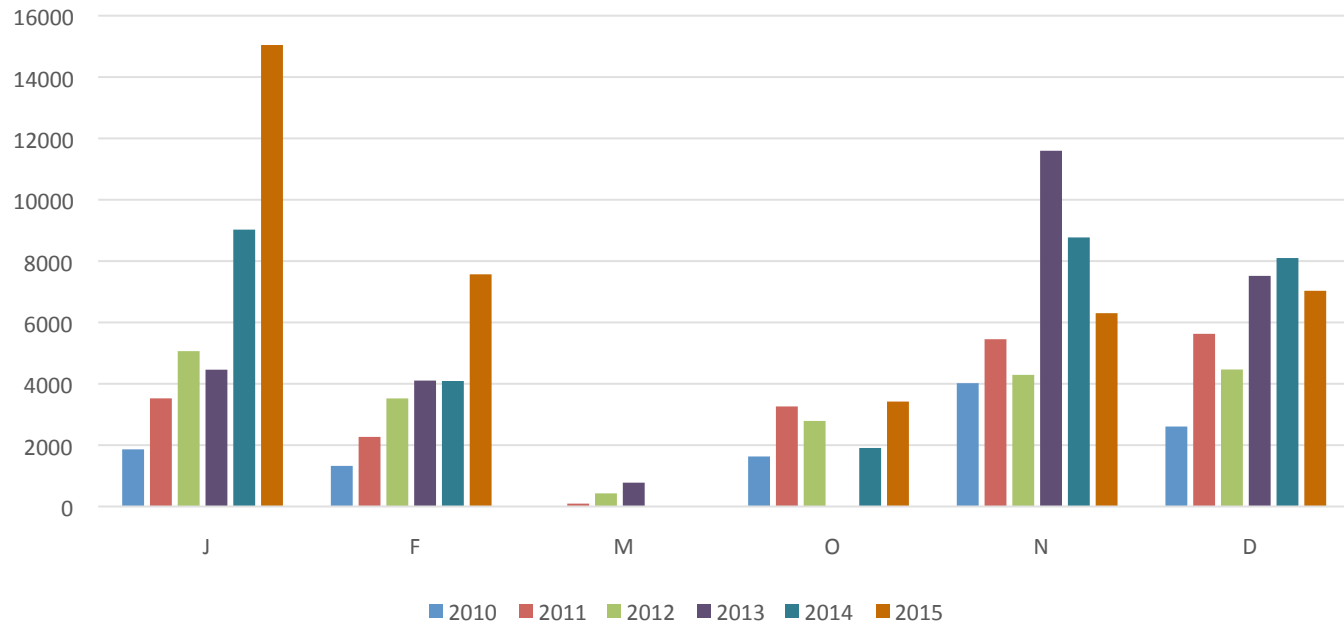
Annual Visitation



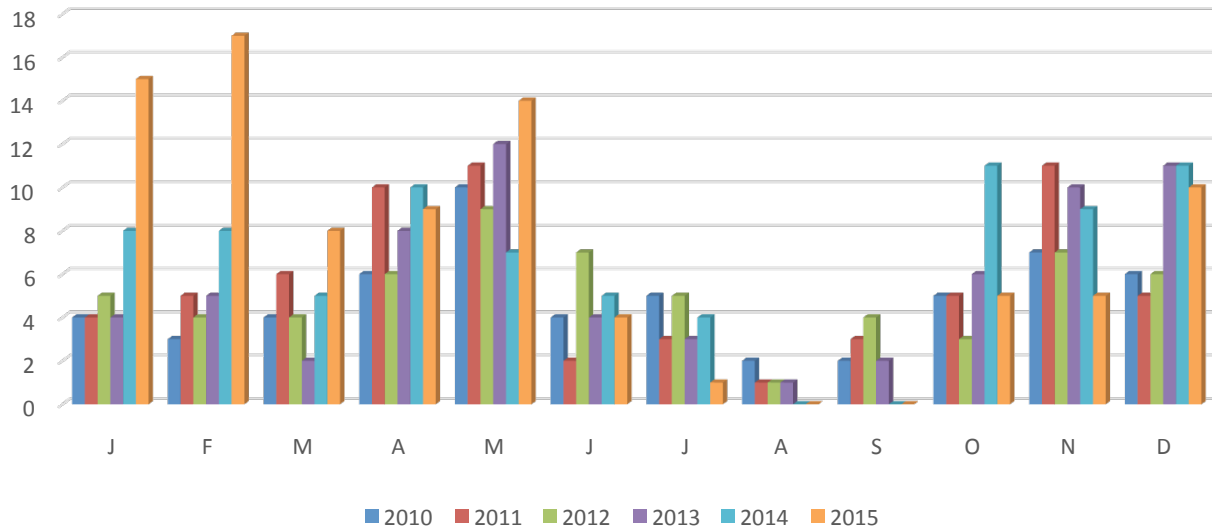
Monthly Visitation



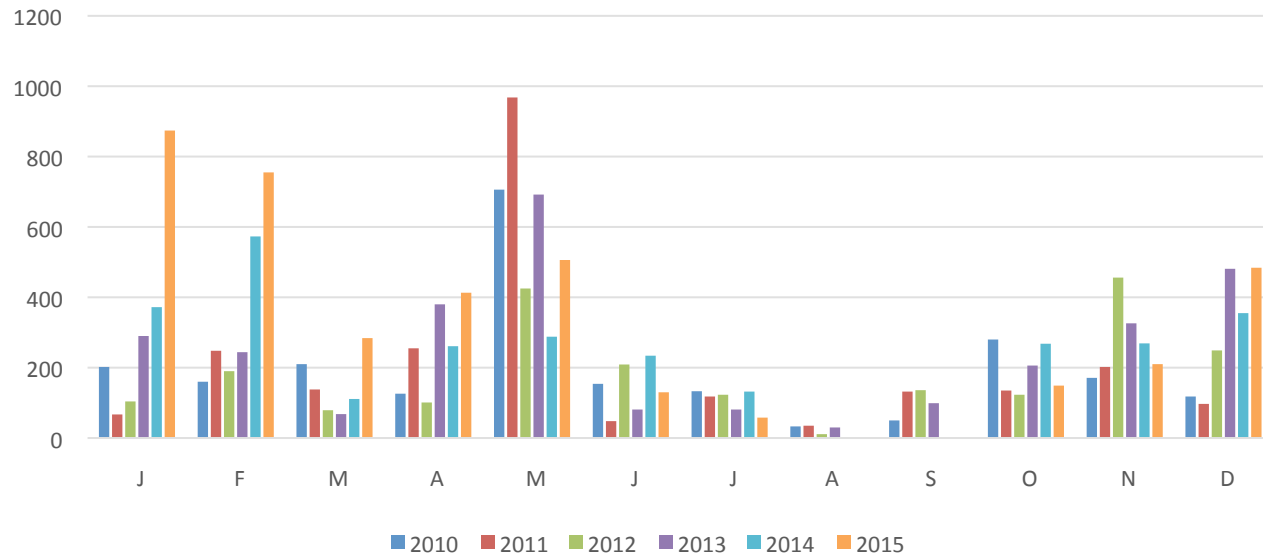
Monarch Visitation



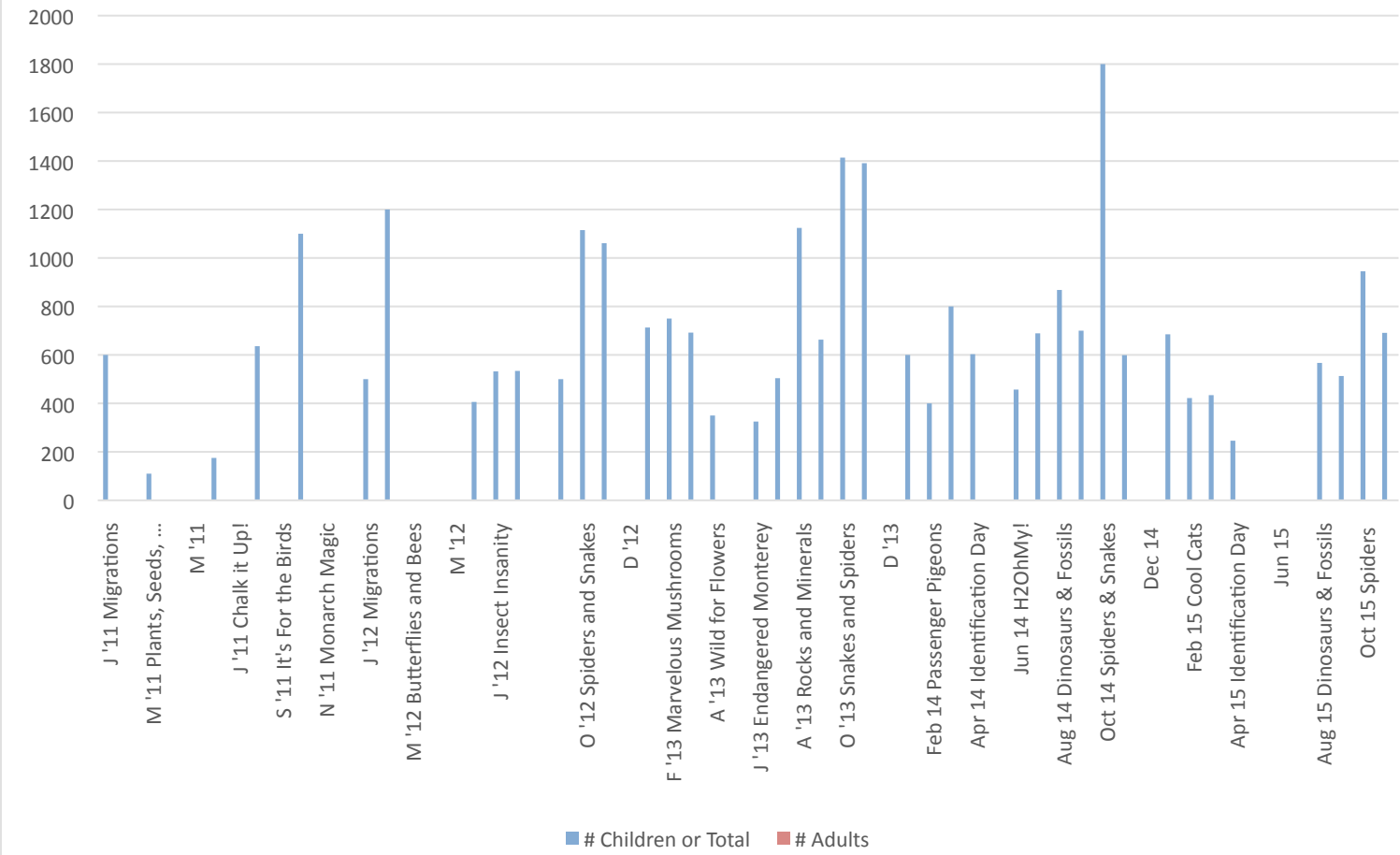
School Group Visits



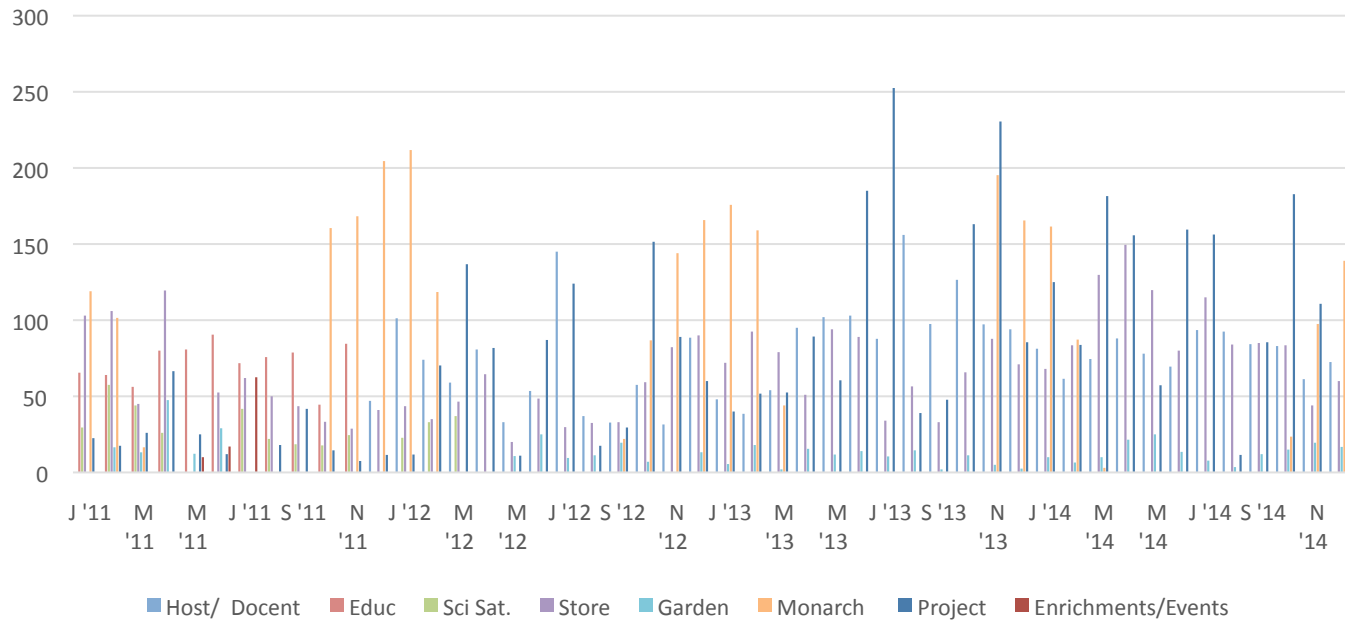
Number of Students



Science Saturday



Volunteer Hours



Volunteer Hours 2015

